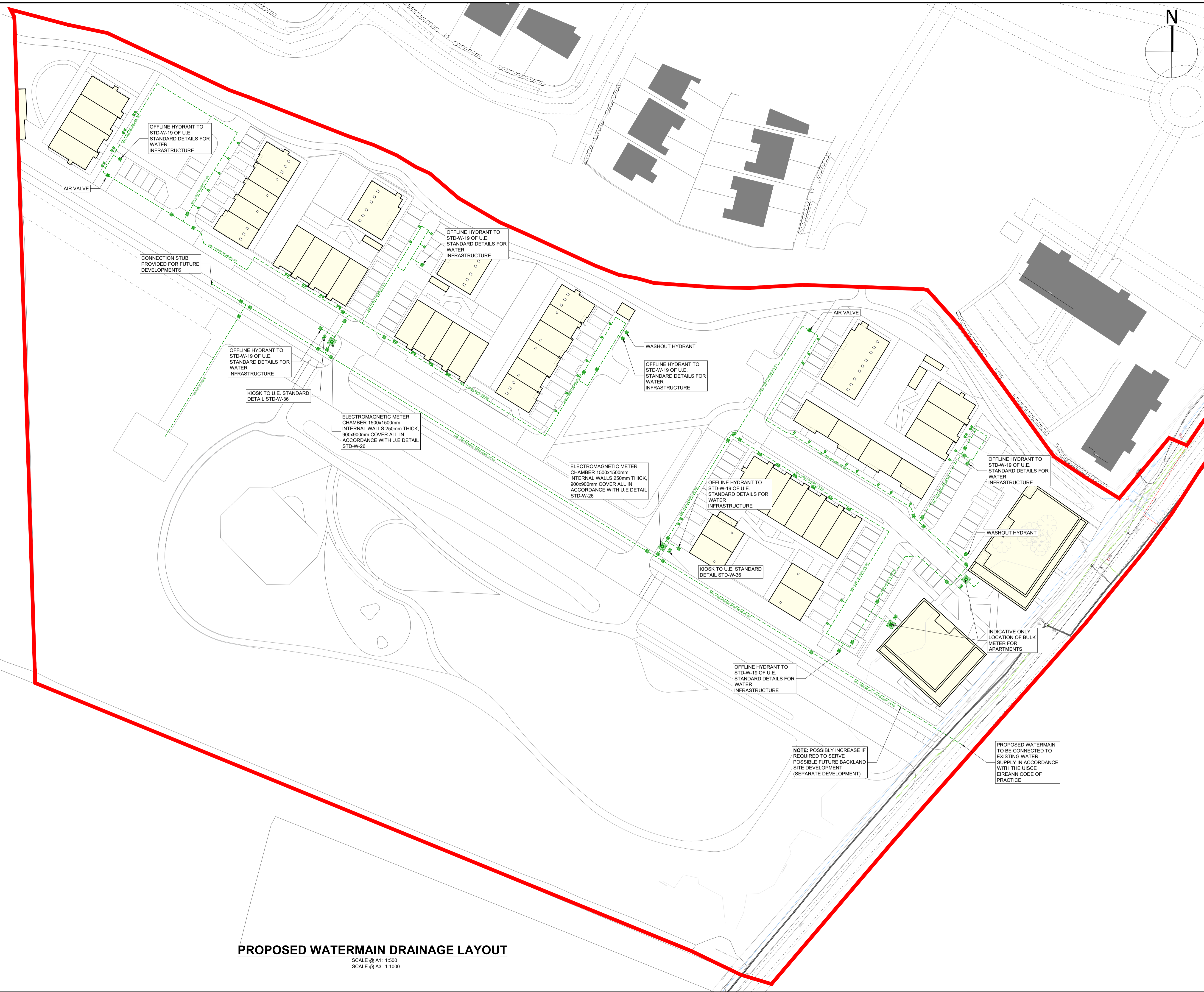
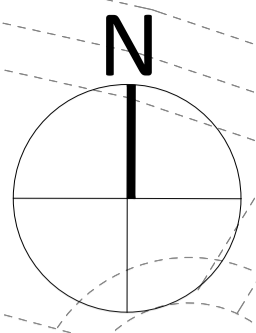


NOTES

1. THIS DRAWING IS TO BE READ IN CONJUNCTION WITH ALL ENGINEERS & ARCHITECT'S DRAWINGS FIGURED DIMENSIONS ONLY (NOT SCALING) TO BE USED. WHERE A CONFLICT OF INFORMATION EXISTS OR IF IN ANY DOUBT - 'ASK'.
2. CONSULTANTS TO BE INFORMED IMMEDIATELY OF ANY DISCREPANCIES BEFORE WORK PROCEEDS.



OFFLINE HYDRANT TO STD-W-19 OF U.E. STANDARD DETAILS FOR WATER INFRASTRUCTURE

AIR VALVE

CONNECTION STUB PROVIDED FOR FUTURE DEVELOPMENTS

OFFLINE HYDRANT TO STD-W-19 OF U.E. STANDARD DETAILS FOR WATER INFRASTRUCTURE

KIOSK TO U.E. STANDARD DETAIL STD-W-36

ELECTROMAGNETIC METER CHAMBER 1500x1500mm INTERNAL WALLS 250mm THICK, 900x900mm COVER ALL IN ACCORDANCE WITH U.E. DETAIL STD-W-26

OFFLINE HYDRANT TO STD-W-19 OF U.E. STANDARD DETAILS FOR WATER INFRASTRUCTURE

WASHOUT HYDRANT

OFFLINE HYDRANT TO STD-W-19 OF U.E. STANDARD DETAILS FOR WATER INFRASTRUCTURE

ELECTROMAGNETIC METER CHAMBER 1500x1500mm INTERNAL WALLS 250mm THICK, 900x900mm COVER ALL IN ACCORDANCE WITH U.E. DETAIL STD-W-26

OFFLINE HYDRANT TO STD-W-19 OF U.E. STANDARD DETAILS FOR WATER INFRASTRUCTURE

KIOSK TO U.E. STANDARD DETAIL STD-W-36

OFFLINE HYDRANT TO STD-W-19 OF U.E. STANDARD DETAILS FOR WATER INFRASTRUCTURE

WASHOUT HYDRANT

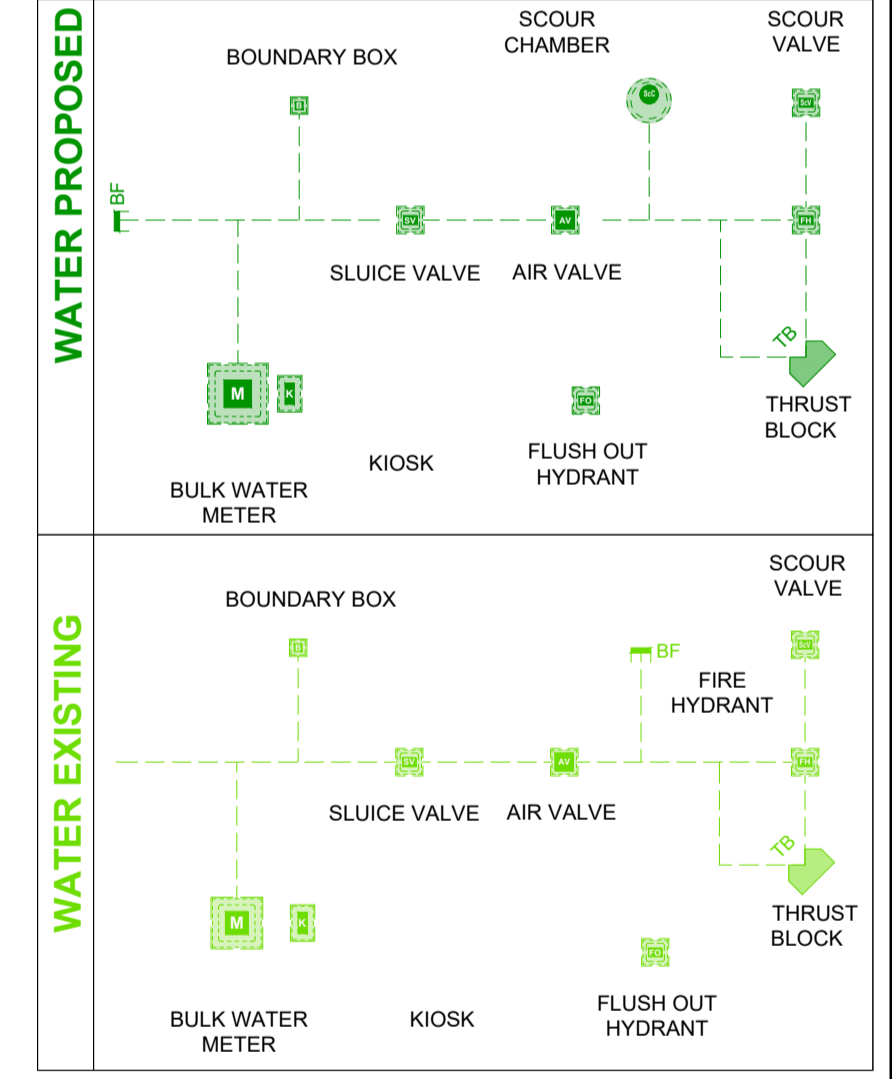
INDICATIVE ONLY LOCATION OF BULK METER FOR APARTMENTS

OFFLINE HYDRANT TO STD-W-19 OF U.E. STANDARD DETAILS FOR WATER INFRASTRUCTURE

NOTE: POSSIBLY INCREASE IF REQUIRED TO SERVE POSSIBLE FUTURE BACKLAND SITE DEVELOPMENT (SEPARATE DEVELOPMENT)

PROPOSED WATERMAIN TO BE CONNECTED TO EXISTING WATER SUPPLY IN ACCORDANCE WITH THE UISCE EIREANN CODE OF PRACTICE

WATERMAIN LEGEND



ISSUE	DATE	DESCRIPTION	BY
PL2	25.06.26	ISSUED FOR PLANNING	MA
PL1	05.06.26	ISSUED FOR PLANNING	MA

Project Engineer: ABIGAIL HARRIS Project Director: CIARAN KENNEDY

PLANNING

BM Dublin Office: Sandwith House, 52-54 Lower Sandwith Street, Dublin 2, Ireland. Tel: (01) 677 3200 Fax: (01) 677 3164
London Office: 5th Floor, Mill House, 8 Mill Street, London SE1 2BA, United Kingdom Tel: (0044) 20 3750 3530
 BARRETT MAHONY
 Consulting Engineers, Civil, Structural, Project Management. E-mail: bmce@bmce.ie Web: www.bmce.ie



CLIENT **GOLDEN PORT HOMES LIMITED**

PROJECT TITLE FOREST LITTLE ROAD GOLDENPORT	BM PROJECT No. 24.183
---	---------------------------------

MODEL REFERENCE	SUITABILITY	REVISION
-----------------	-------------	----------

DRAWING TITLE
PROPOSED WATERMAIN DRAINAGE LAYOUT

DWG DRAWING REFERENCE FR-BMCE-ZZ-ZZ-DR-C-13210	STATUS PL2	REVISION
--	----------------------	----------

PROPOSED WATERMAIN DRAINAGE LAYOUT

SCALE @ A1: 1:500
SCALE @ A3: 1:1000